

The logo features the word "CRAFCO" in a large, bold, red, sans-serif font. A registered trademark symbol (®) is positioned to the upper right of the "O". Below "CRAFCO" is the word "INC" in a smaller, red, sans-serif font. Underneath "INC" is the phrase "PRESERVATION PRODUCTS" in a bold, white, sans-serif font. The entire logo is set against a black background with two diagonal red lines forming a triangular shape. The top-left corner of the image is a grey triangle.

CRAFCO[®]
INC
PRESERVATION PRODUCTS

ABOUT YOUR PRESENTER

Lisa Zentner

Director of Specialty Products



- 25+ Years Pavement Preservation
- Asphalt & Concrete
- Fun Fact: The word “asphalt” appears on birth certificate





— PRESERVATION PRODUCTS —



Protect roads, bridges, and buildings from hydro harm.
Our solutions are successful, and we service our customers by providing beneficial support in the form of comprehensive design review and technical advice during construction and application.

ULTRASEAL WATERPROOFING SYSTEM

The Ultraseal Waterproofing System is a built-up multilayer system used to protect the bridge deck from chlorides, water penetration and other harmful materials.



WHY IT MATTERS

Ultraseal works.



Ultraseal is hot-applied in place, unlike its closest competitor, and is an easy-to-use system at new construction or during maintenance. It is long-lasting and can survive multiple maintenance cycles. Plus, Crafc0 offers training and assistance directly and through distributors and supply centers on this unique waterproofing solution—and all products.

Ultraseal is a win-win.



For state DOTs: It's an innovative solution that supports your goal of moving toward 100-year bridge life.
For contractors: It creates new opportunities for growing business through the Infrastructure Bill.
For construction pros: It's easily trained on and applied in a single session, and you can start now.
For taxpayers: It protects your investment in infrastructure.

WHY ULTRASEAL?



- 100% solids, no field mixing
- *No VOC restrictions or applicator license required
- Less expensive than competing systems
- Many Contractors you already sell to have the equipment



ULTRASEAL WORKS



- Flowable/Pourable
- Seamless, Completely Monolithic
- Highly Adhesive-Tenacious Bond
- Tough, Thick and Self-Healing



WIFM?

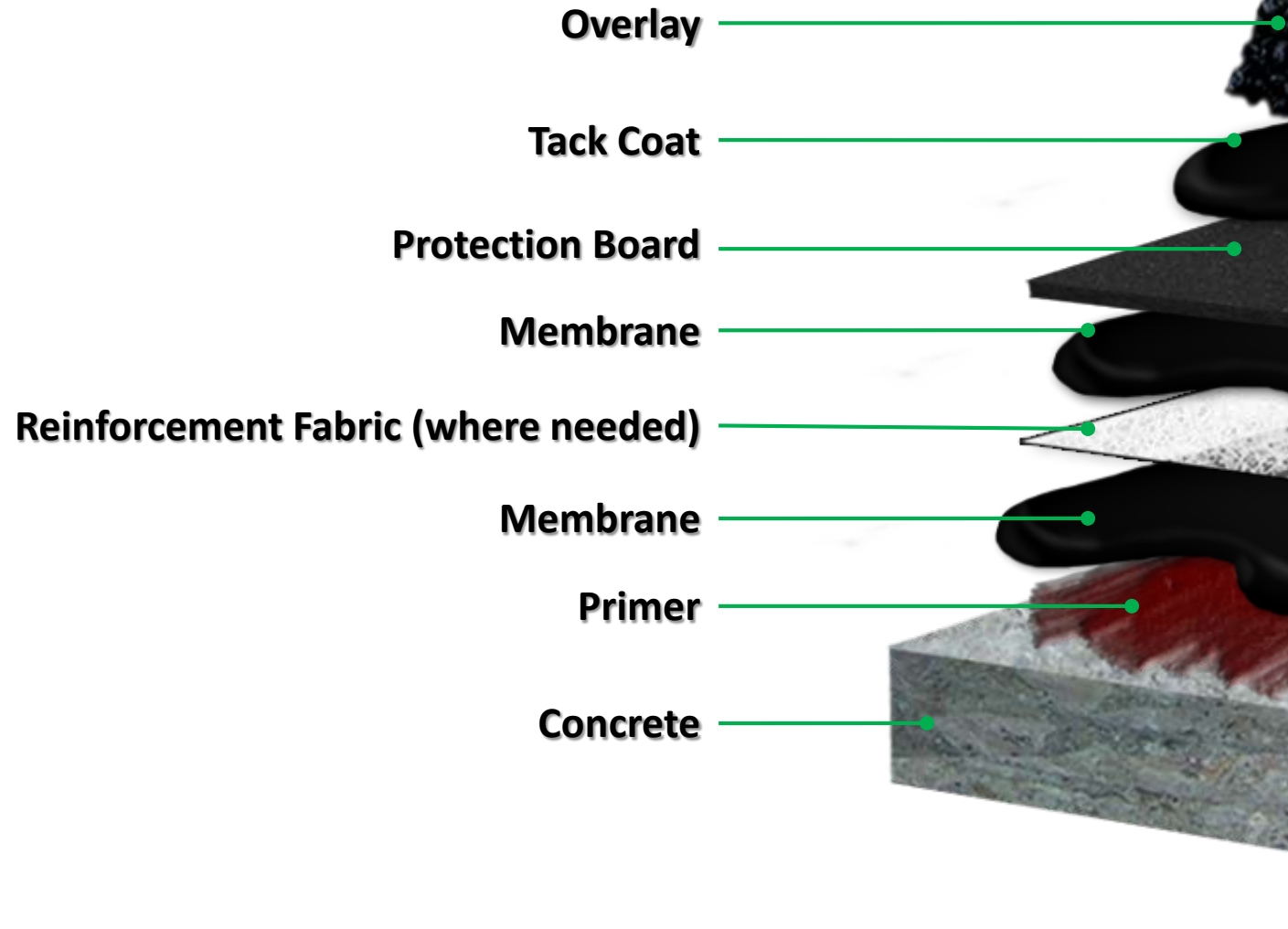


- Low Cost ~ \$3.00 / FT²
- High Performance
- Volume = Equipment Rental
- Maintainable
- Training available – contractors or DOT's
- Decades of performance
- Ideal for rehabilitation project or new construction



ULTRASEAL BRIDGE DECK WATERPROOFING SYSTEM

Is a built-up multilayer system used to protect the bridge deck from chlorides, water penetration and other harmful materials.



— KANSAS BRIDGE CASE STUDY —

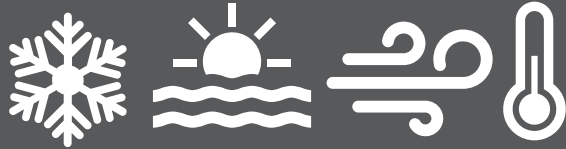
This bridge deck preservation project in Topeka was recognized for its superior collaboration in construction planning, design, and execution by the Kansas Contractors Association. The winning project was a test initiative involving multiple entities, including Crafcro customers HAMM Companies and Bettis Asphalt and the Kansas Department of Transportation.

The teams used Crafcro Ultraseal 3750 as the bridge deck waterproofing membrane.



UNIQUE PROBLEMS—SOLVED

Extreme weather



Ultraseal is ideal for areas that experience extreme weather conditions:

- Bridges that will otherwise be harmed by the **freeze/thaw cycle** and caustic salt application
- **High-wind conditions** that make stick-and-peel solutions unsuitable
- Places where **temperature fluctuations** cause delamination

Traffic movement



Application of the Ultraseal system is not hampered by:

- **Heavy truck traffic**—vibration that makes pre-formed solutions impractical does not affect this build-in-place solution
- **High usage volumes**—Ultraseal can be installed by closing just one lane at a time to minimize impact to traffic
- **Falling debris**—even popping corn kernels couldn't stop Ultraseal!

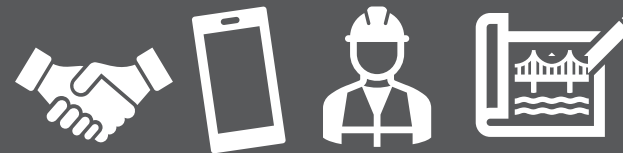
Life-cycle considerations



Ultraseal can be applied at any point in the bridge life cycle:

- **When building new**, applying the Ultraseal system is a great solution to achieving long deck life
- **During routine maintenance**, the system can be applied after the driving course is milled off or an existing Ultraseal membrane can be left untouched
- **After a major accident**, emergency repairs can be made by flood coating with the same Ultraseal system for a seamless solution

Labor shortages



Labor shortages are affecting all contractors. Select a solution that:

- Is **easy to apply** and doesn't require a team to wrangle a 75-foot roll—Ultraseal comes in a 4x8' sheets that are hot-applied
- Can be **built-in-place** to address the unique conditions of the jobsite as you see them
- Takes **less than a day to train on**, with Crafcro and our distributors available to help in person or via video call



Step 1: Prime

Ultraseal is the ideal solution for high-traffic areas and can be used even in the presence of significant vibration



Step 2: Apply

The Ultraseal waterproofing membrane is efficient and easy to apply, even for a small team, with less than a day's training.



Step 3: Protect

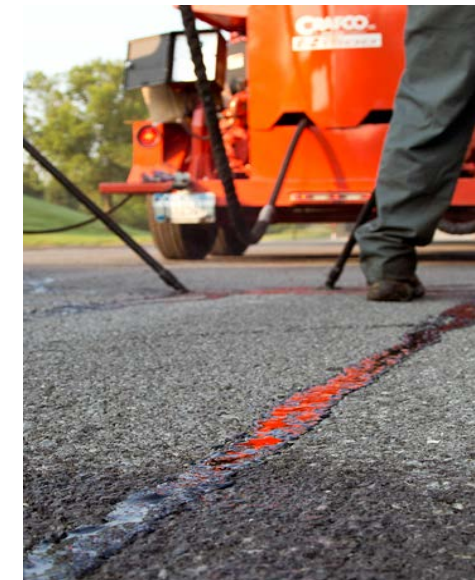
The protection course then goes down quickly in stress-free 4x8' sheets, completing the process.

EXCELLENCE IN PARTNERING





Delivering Confidence Through Innovation, Quality and Value Since 1976



Quality • Success • People • Integrity • Relationships • Innovation • Tidy

Wide Crack Treatment

Difficult Repair Areas

Mastic products provide solutions for distresses that are too large for crack sealing, yet too small for complete reconstruction.

- **Wide Cracks (<1 ½ inches)**
- **Longitudinal & Transverse Cracks**
- **Potholes**
- **Depressions**
- **Alligatored Pavement**
- **Joint Failures**
- **Rumble Strips**
- **Uneven Pavement**
- **Parking Lot Fixtures/Maintenance**
- **Bridge Decks/Railroad Tracks**
- **Manhole Levelling**
- **Spalled Concrete**





What is Mastic Sealant?

Asphalt mastic is hot-applied repair material made of polymer-modified binder and engineered aggregate



Mastic One[®] Composition

- Binder- Asphalt modified with polymers and oils to better resist shoving and cracking.
- Aggregate – designed to provide mass and stability for compression resistance and to meet load bearing requirements, while still allowing the material to flow.

Mastic Attributes

Prepackaged/Easy to Apply

Flowable/Pourable

Aggregate Filled

Flexible

Bulkable

Durable/Resilient

Waterproof

Highly Adhesive

Rapid Set

Voidless/No Compaction required

Resistant to De-icing Chemicals



Mastic One[®] - meets ASTM 8260 Specs Type I and II

Crafco Mastic One[®] and Mastic One[®] Type 2 meet ASTM D8260 specifications for hot-applied asphalt aggregate-filled mastic

- Mastic One[®] meets ASTM D8260 Type I spec
- Mastic One[®] Type 2 meets ASTM D8260 Type II spec

<u>Test</u>	<u>ASTM D8260 Type I Specification Limits</u>
Mastic Resilience (ASTM (8260)	50% minimum
Effects of Rapid Deformation (ASTM D2794) (-7°C)	3 passing specimens no chipping, cracking or separation 8 N-m
Crack Bridging (ASTM C1305 modified) (-7°C)	Pass 3 cycles
Mastic Stability (ASTM D8260) (70°C)	40.0 mm maximum

Mastic Applications

The Flexible Repair Solution

Mastic Applications

Repair wide cracks



Mastic Applications

Repair longitudinal cracks



Mastic Applications

Repair transverse cracks



Mastic Applications

Recessed thermal cracks



Mastic Applications

Fill potholes



Mastic Applications

Joint Failures



Mastic Applications

Joint failures



Mastic Application Video

Repair and maintenance of highway rumble strips



CLICK VIDEO BELOW



Mastic Applications

Level uneven pavement



Mastic Applications

Use Mastic for parking lot fixtures and maintenance



Mastic Applications

Bridge deck approaches



Mastic Applications

Mastic evens out railroad crossings



Mastic Applications

Manhole covers



Mastic Applications

Pavement surface pre-treatment



Many types of distresses need to be repaired before a surface treatment...

- Standard Crack treatments will not address all the defects.
- To remove and replace asphalt is costly and time consuming.

Mastic Applications

Pavement surface pre-treatment



Mastic Applications

Sunken curb repair



Mastic Applications

Alligatored Areas



Mastic Installation - Equipment




Use only an indirectly-heated melter with sufficient agitation such as the Crafcro Patcher II, Crafcro Patcher 4, or other approved melter.


If appropriate melters are not used, application difficulties, pump system damage, and extreme wear can result!!

Mastic Installation - Equipment

- Effective horizontal agitator system
- Maintain a uniformly mixed product
- Thermostatically controlled hot oil jacketed heating system
- Means to dispense product
- Heat transfer oil between 450 and 525°F (323 - 274°C)



 +1 (602) 276-0406

 +1(480) 961-0513

 sales@crafco.com

 6165 W. Detroit St., Chandler, AZ 85226

